

Tampere University
Tampere University of Applied Sciences

Research Strategy of Tampere University Community

Human
Potential
Unlimited.



Tampere university community is made up of the research-intensive Tampere University and development-focused Tampere University of Applied Sciences. These universities form a community of 35,000 students and academic experts.

In our community, knowledge and novel inventions are effectively brought into practice through close collaboration, networking, and a well-functioning innovation ecosystem.

We are committed to openness, sharing of ideas, sustainable development, fairness, and equality.



Our vision

The Tampere university community responds to strategically selected global and local challenges through our multi- and transdisciplinary research, development, and innovation activities.

Working in close collaboration, research in technology, health, and society will produce breakthroughs in science, business, and society.

Our research will make world-class impact, both scientifically and societally, in the areas determined by our profile.

How we realize our vision

We make the Tampere university community an international forerunner in multi- and transdisciplinary research.

We carry out our vision by building a globally-oriented, research-intensive university which will promote progression from fundamental research, through innovations and process design, to novel applications and implementation.

We strengthen our stimulating research community by intensive networking, cooperation and outstanding research environments.

We promote responsible and open science.



Vision through outstanding research

Our research profile is largely based on the strategically selected profiling areas and the research activities of the spearhead groups.

Our spearheads of research have been defined as "outstanding" by international evaluations.*

We invest in human capacity and excellent infrastructures to nurture world-class research environments.

Our promise

We are committed to excellence in research, development, and innovation.

We will produce leading professionals of knowledge, who will change the world by tackling global challenges for humanity.

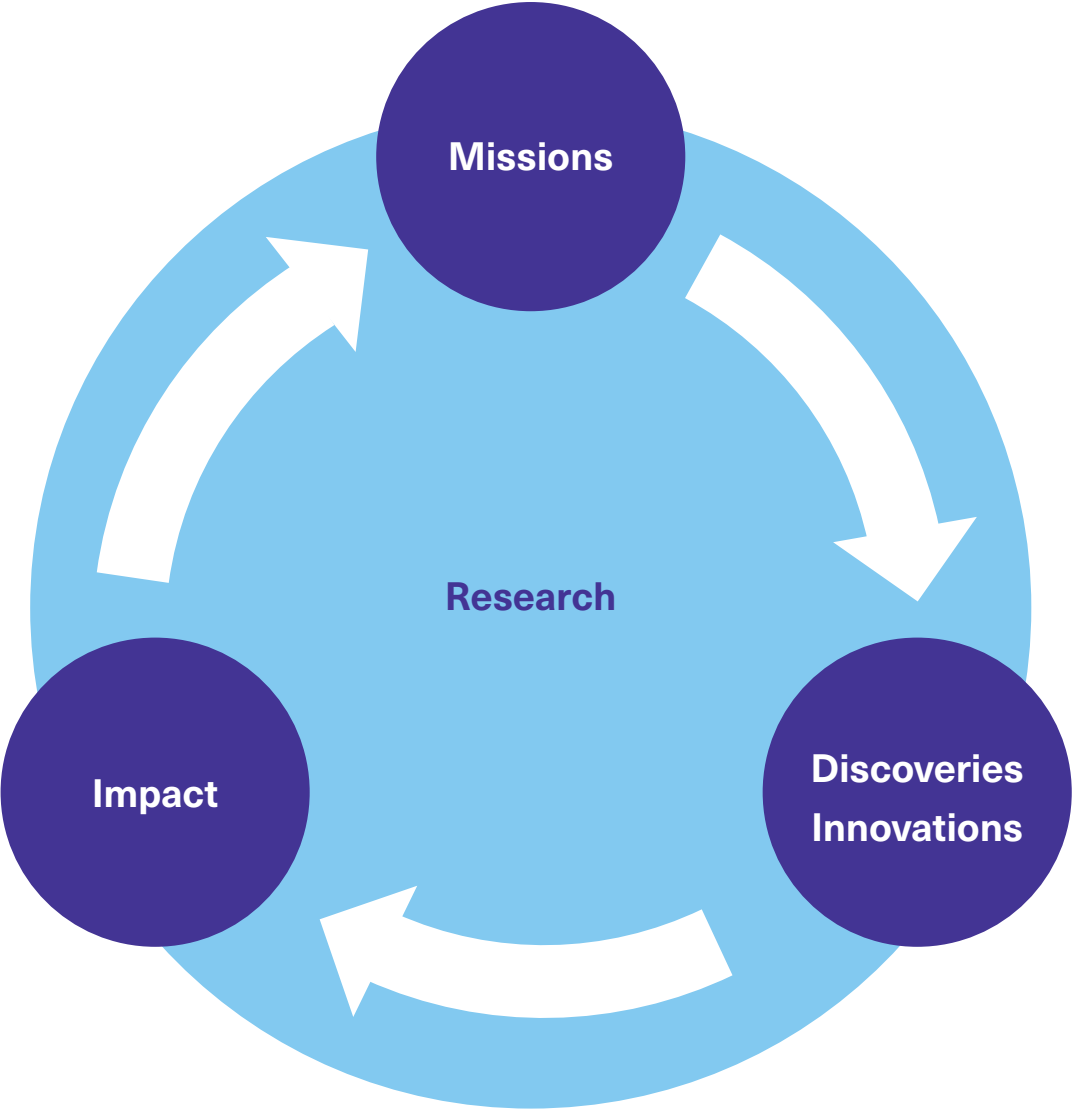
We will make scientific discoveries and breakthroughs, which will lead to remarkable innovations and applications, benefiting humanity through well-being and sustainable society and economy.

We value research integrity. We conduct research responsibly, adhering to good scientific practice and ethical principles.

Local and global challenges

Strengths and opportunities of Tampere university community:

- Spearheads and profiles of research
- Multi- and transdisciplinary research
- Partnerships
- Research environments and support

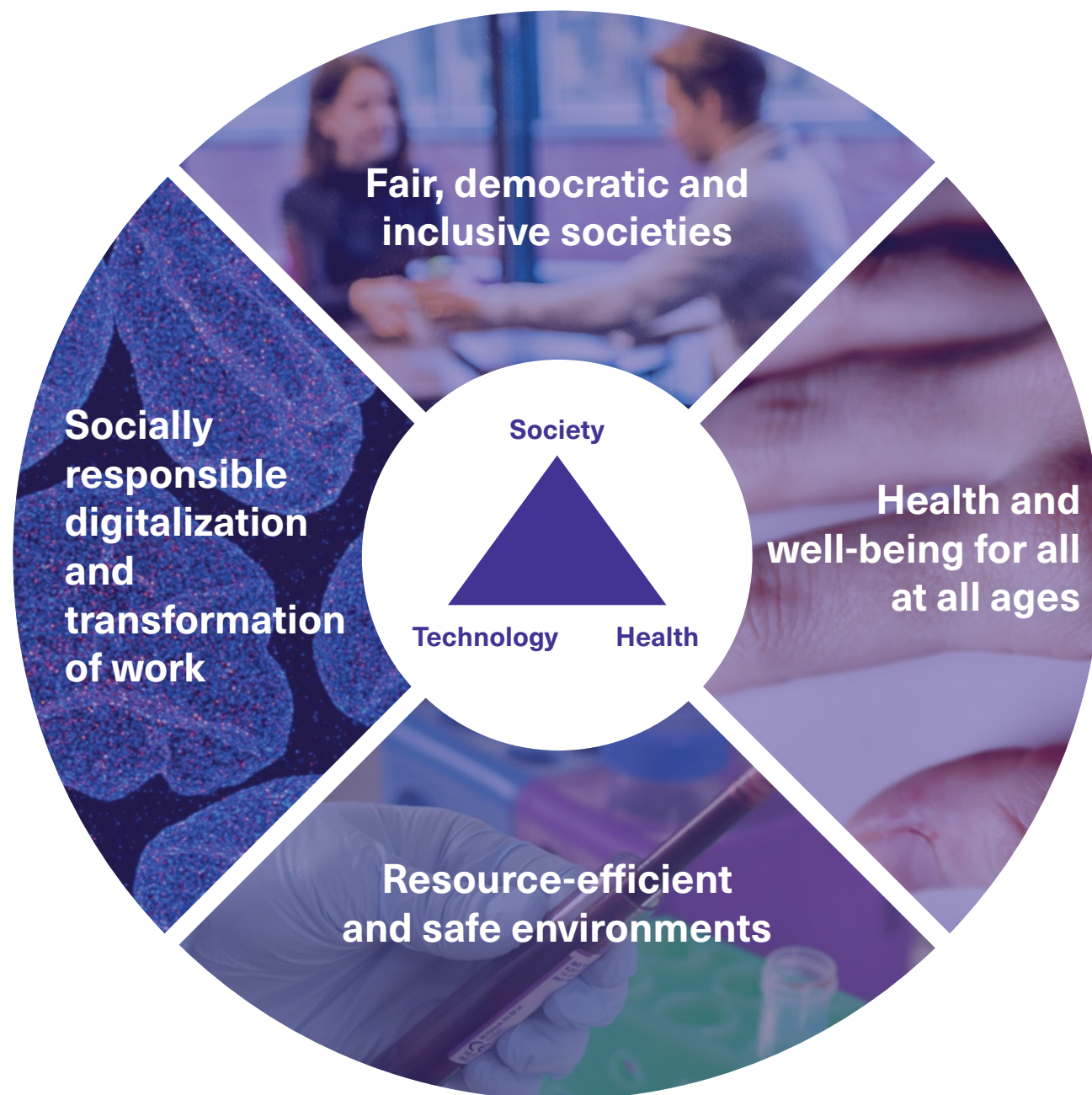


Bringing fundamental research into practice

Our missions



The missions of Tampere university community



Key actions to implement research strategy

Management and organization

1. The Tampere university community manages and facilitates research by strategic planning and decision-making
2. Research is carried out in research groups, research centers, and multi- and transdisciplinary platforms
3. The university community reinforces the utilization of research results for the benefit of science, society and economic life



Infrastructures and resources

4. The operative management team supports both existing spearhead research and new emerging fields with sufficient resources
5. Top-quality science is boosted by strategic investments in research environments
6. Researchers actively utilize and contribute to local, national, and international infrastructures
7. The research infrastructures are strategically planned, described in a consistent way, and opened to partners

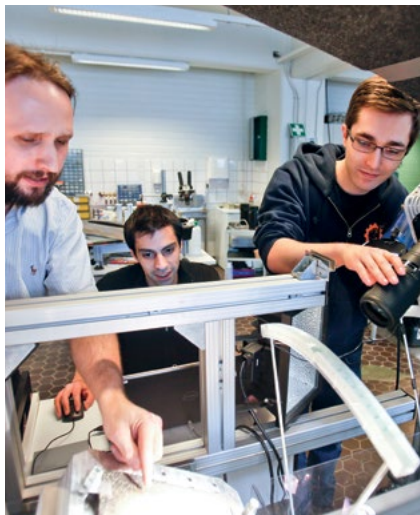
Education and career

- 8. Research and education are tightly integrated in the study programs and research communities
- 9. The joint Doctoral School and doctoral programs offer excellent training to every researcher at all career levels
- 10. A clear and transparent career path system is established to invite talented, internationally oriented researchers
- 11. Promising key researchers are offered substantial starter packages
- 12. The university community actively promotes diversity and gender equality



“To be good is no longer enough – excellence, by definition, must go beyond that.”

Nature (editorial) 554, 403-404 (2018)

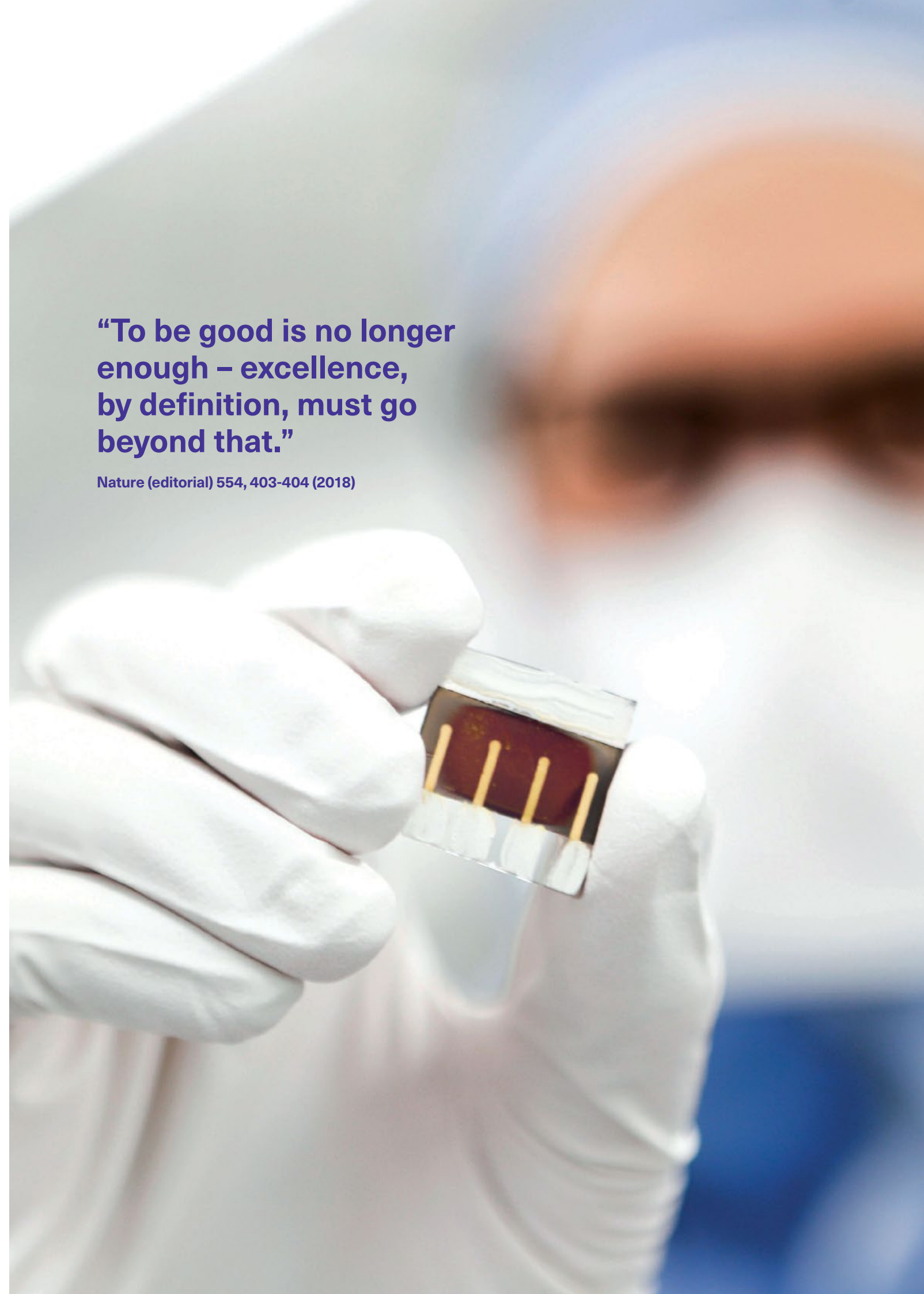


Research funding and services

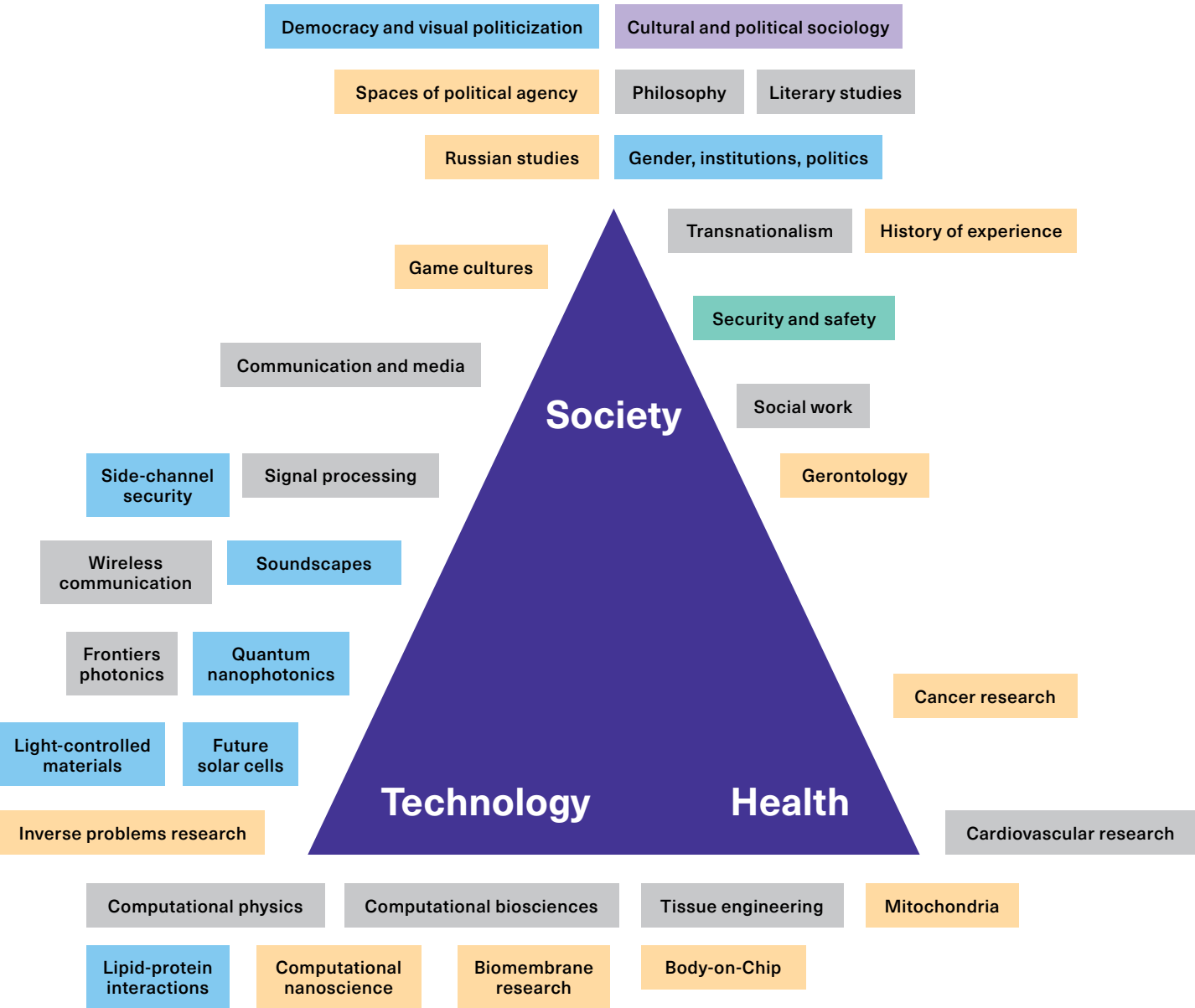
- 13. External research funding is applied in a systematic and proactive manner based on clear objectives
- 14. The faculties exploit a common operating model to achieve the desired funding
- 15. Well-resourced support services guarantee successful acquisition of funding

Open science and communication

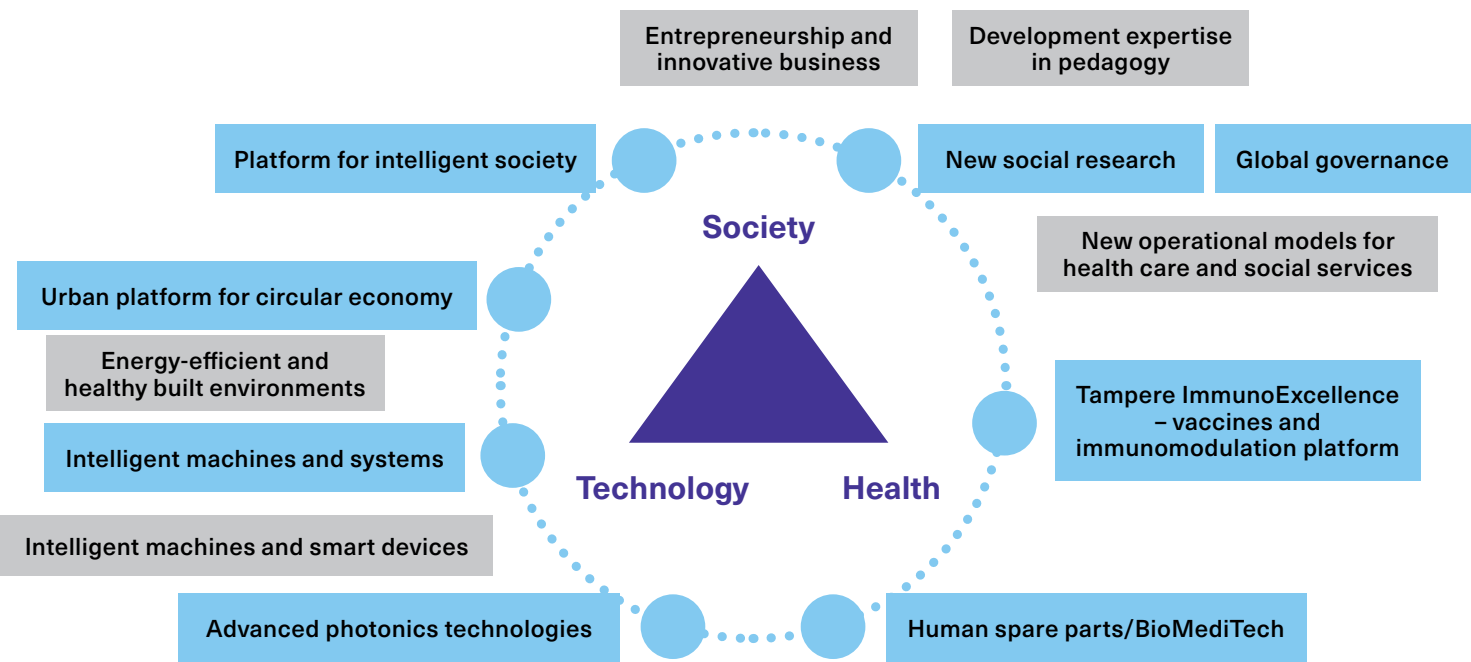
- 16. The Tampere university community implements an ambitious open science policy, covering publication, data, and open source guidelines
- 17. Researchers are encouraged and supported to participate in social media and act as social commentators



Recent and current research spearheads



Focus and profiling areas



Human Potential Unlimited.

