

# Strategy of Tampere University 2030

# Strategy of Tampere University 2030

## OUR STRATEGIC GOALS – IN 2030 WE WILL BE:

- A thriving university community
- An internationally esteemed research university
- An educator of world-changing experts
- A strong partner and an active societal influencer



### Cross-cutting development themes:



Principles of sustainable development



Cooperation in higher education community



Opportunities provided by digitalisation



International networks

Together with our partners, we develop solutions for global sustainability challenges.

We work together to build a sustainable world

We create new knowledge and expertise that stand the test of time.

We bring together research and education in health, society and technology.

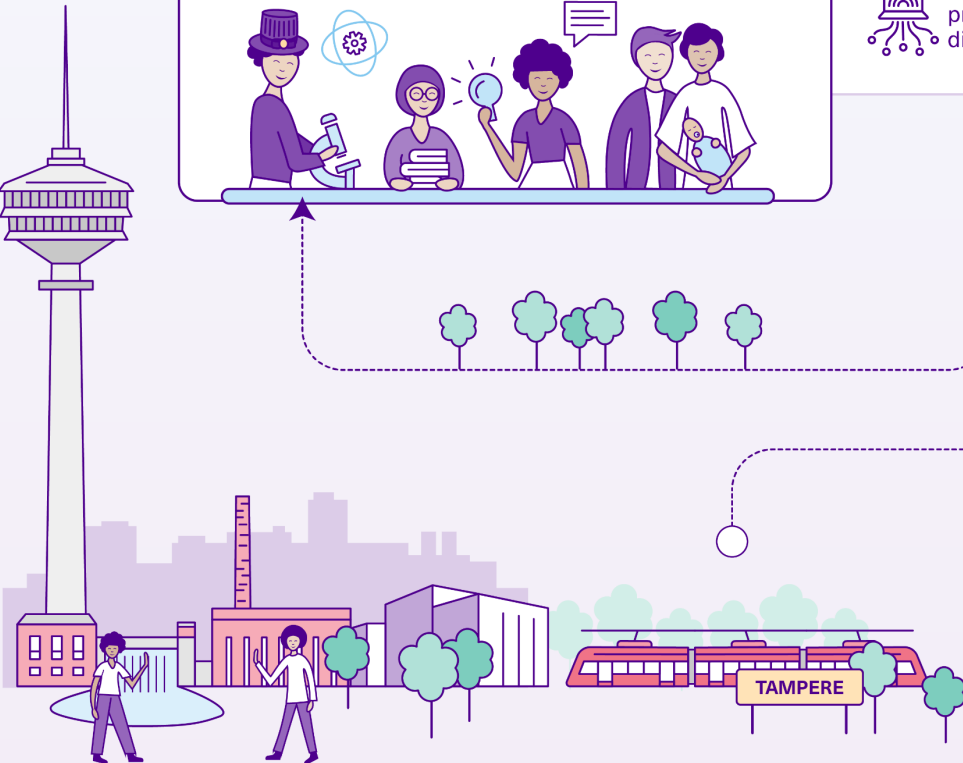
### VALUES:

- Courage
- Critical thinking
- Diversity
- Erudition – Bildung
- Learner-centredness
- Openness
- Responsibility

TECHNOLOGY

HEALTH

SOCIETY



Our purpose:

# We work together to build a sustainable world



- Our university brings together scientifically excellent and high-impact research and education in **technology, health and society**.
- Together with our partners, we are developing solutions to improve human health and well-being, societal resilience, and environmental sustainability.
- We are creating new knowledge and expertise that stand the test of time.

# Our strategic goals – in 2030 we will be:

## A thriving university community

- Our university is the best place to study and work in Finland, and we can be proud of our community.
- We ensure that everyday life runs efficiently and that our community members are empowered.
- Our stable finances enable us to deliver high quality and create resilience in a changing environment.

## Indicators

- Fluency of everyday processes: **This question from the Pulse Survey for staff: Would you recommend Tampere University as a workplace?**
- Student satisfaction: **Overall results of the students' feedback survey**



# Our strategic goals – in 2030 we will be:

## An internationally esteemed research university

- Our research is of high quality and impact, and we promote open science.
- We conduct both basic research and multidisciplinary research arising from it and address major societal challenges.
- We create attractive research environments and infrastructures for researchers.

## Indicators

- High-quality scientific publications: **Number of Jufo 2 and 3 level publications**
- Success in acquiring high-level competitive research funding: **Number of ERC-funded projects, Academy Professors and Academy of Finland-funded Centres of Excellence**
- The university's success in university rankings: **Development of the university's performance in selected university rankings** (initially Times Higher Education and QS; these will be refined)



# Our strategic goals – in 2030 we will be:

## An educator of world-changing experts

- We offer Finland's widest range of study opportunities in the best city to study in the country.
- We ensure the high quality of teaching and pedagogical solutions that support learning.
- International education and continuous learning are significant parts of our operations.

## Indicators

- Fluency of study processes: **Students who complete their bachelor's degree within the target time** (% , in relation to the number of those who started)
- International degree education: **Number of graduates and international students in degree programmes**
- Attractiveness of continuous learning offerings: **Number of attendees in continuing education days**



# Our strategic goals – in 2030 we will be:

## A strong partner and an active societal influencer

- We are a trusted, respected, and visible societal actor.
- We build and maintain strong partnerships with business life, and the public and third sectors.
- We stimulate and help the renewal of societal actors and structures.

## Indicators

- Stakeholders' views of the university: **A standardised survey conducted annually for selected stakeholders** (communications unit is responsible for the implementation)
- External funding for research, development and innovation: **External funding** (Business Finland, EU funding, Finnish and international companies, Finnish and international funds and foundations, cities and municipalities, ministries; national and international co-financed projects)



# Cross-cutting development themes



## The principles of sustainable development guide our operations

- As a university, we are aiming for carbon neutrality by 2030.
- We act in ecologically, socially, and economically sustainable manner.



## We are active in international networks

- We develop our operations through international cooperation. We support students and staff in international networking.
- We are actively involved in the development of ECIU University (European Consortium of Innovative Universities).



## We renew our operations through digitalisation

- We prepare the university's digitalisation roadmap to describe how digitalisation helps to develop the university's operations.
- We participate in the national higher education Digivisio 2030 project creating a learning ecosystem that will benefit society.

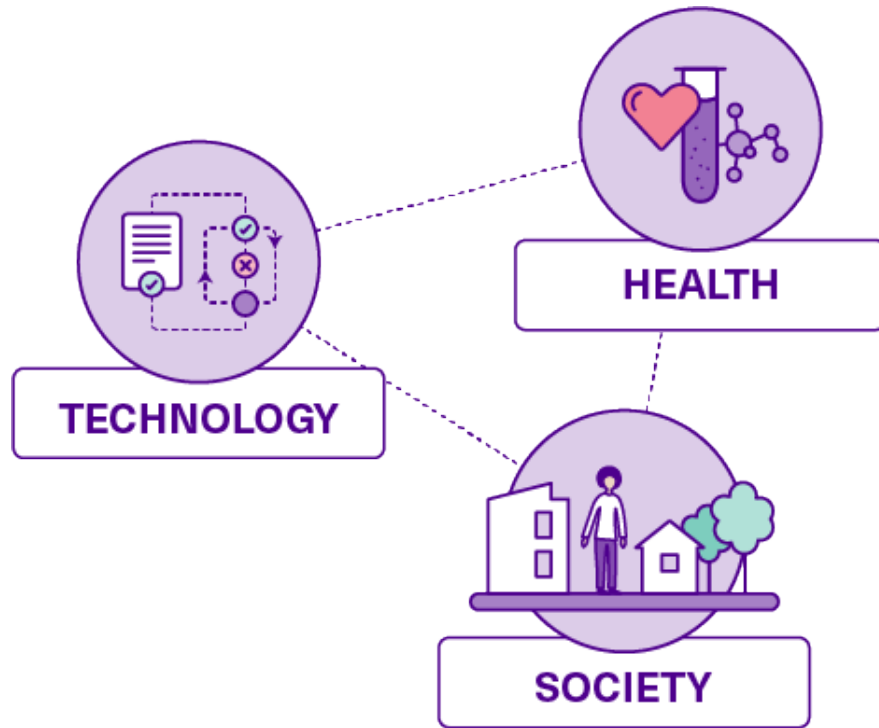


## We use the opportunities of collaboration in the higher education community

- We deepen cooperation in Tampere's higher education community in the areas of education, research, development, and innovation activities and services.
- We have regional impact through the University Consortia of Pori and Seinäjoki.



# Our profile in research and education



- We bring together research and education in **technology, health and society**.
- We are looking for solutions for building a more sustainable world at the interfaces of these fields, together with our partners.
- Our strong themes include, among others
  - Well-being
  - Sustainable urban development
  - Gamification
  - Research of light
- We actively look for and support the development of new emerging fields.
- We strive to be an internationally esteemed research university, an impactful educator, and a strong partner and an active social influencer.

# Our values are



## Courage

Manifested in our passion to join forces to tackle the world's most vicious problems. We feed inspiration for creating inventive and open-minded solutions.

## Critical thinking

Manifested in us challenging established truths and engaging in an appreciative and constructive dialogue. Constructive critical thinking drives creativity. Our operation is founded on the freedom of thought and expression and an atmosphere of trust.

## Diversity

Manifested in our appreciation of different people, fields and traditions. We encourage cooperation and identifying new potential. Our foundation is laid on equality.

## Erudition – Bildung

Manifested in our scientific and artistic ambitions both within individuals and the community. Appreciation for others encompasses all our actions.

## Learner-centredness

Manifested in us promoting learning and development potential. Our operation is driven by the learners' best interests. Everyone learns in our community. Our aim is to evoke curiosity and a thirst for learning.

## Openness

Manifested in our communications, decision-making and the way we open our community up to society to highlight our scientific achievements and maximise our impact. Our mutual interaction is open-minded.

## Responsibility

Manifested in our research, education, the way our community operates, and societal impact. We lead the way in sustainable development.

# University's strategy indicators 2023

Strategic goals (perspectives)	Goals to be measured	Indicators	Why is this indicator used and what does it tell us?
A thriving university community	Fluency of everyday processes	<b>This question from the Pulse Survey for staff: Would you recommend Tampere University as a workplace?</b>	Sums up issues related to occupational well-being and the perceived efficiency of operations
	Student satisfaction	<b>Overall results of the students' feedback survey</b>	Provides an overall view of students' satisfaction with their studies
An internationally esteemed research university	High-quality scientific publications	<b>Number of Jufo 2 and 3 level publications</b>	Shows the trend in the number of top-ranked publications
	Success in acquiring high-level competitive research funding	<b>Number of ERC-funded projects, Academy Professors and Academy of Finland-funded Centres of Excellence</b>	Describes competitiveness and success in the funding of high-level research
	The university's success in university rankings	<b>Development of the university's performance in selected university rankings, initially Times Higher Education and QS; these will be refined</b>	Describe the university's scientific level and prestige multidimensionally
An educator of world-changing experts	Fluency of study processes	<b>Students who complete their bachelor's degree within the target time (% , in relation to the number of those who started)</b>	Indicates the fluency of studies, predicts graduation on time; important in terms of the societal education task of the university
	International degree education	<b>Number of graduates and international students in degree programmes</b>	Describes the growth of international education; important in terms of the societal educational task
	Attractiveness of continuous learning offerings	<b>Number of attendees in continuing education days</b>	Describes the growth of continuous learning activities and the attractiveness of our offerings
A strong partner and an active societal influencer	Stakeholders' views of the university	<b>A standardised survey conducted annually for selected stakeholders</b> (communications unit is responsible for the implementation)	Describes the views of key stakeholders on the university's operations
	External funding for research, development and innovation	<b>External funding</b> (Business Finland, EU funding, Finnish and international companies, Finnish and international funds and foundations, cities and municipalities, ministries; national and international co-financed projects)	Describes how closely we work together with companies and municipalities, e.g. joint projects; indicates the attractiveness of the university as a partner